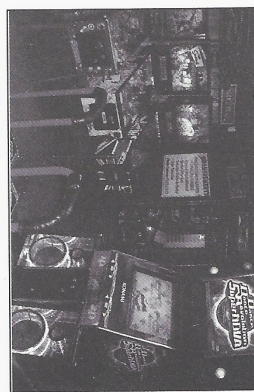
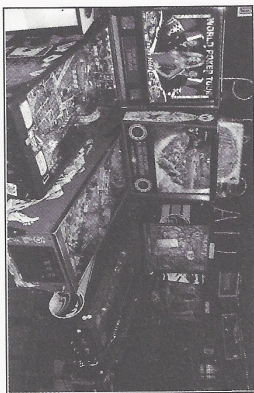


20 TNT

AMUSEMENTS INC.

OVER 75 ARCADE
GAMES TO PLAY!

ALL FOR FREE



Please come and party with us and wander through our 7 room maze-like arcade and play pinball & Video for free!

A UNIQUE FUN EXPERIENCE FOR ALL AGES!

- Occasion: _____
- Who Invited You?: _____
- Party Date: _____
- Time We Party: _____
- We Will Be Serving: _____
- R.S.V.P. To: _____
- Party Location: _____ 1310 Industrial Highway Southampton, PA 18966

Directions on Back

Feb-07

Guen Where We're Having



In case you get lost call TNT at: 215-953-1188

PA TURNPIKE Coming East: Off at Exit 343, (Old Exit 27) (Wallow Grove), take ramp for 611 North. At first light, make a sharp right on Mill Road. Follow for 2 1/2 miles to dead end (Mill Road turns into Warrinister Road about half way). Make a right on County Line Road. Go left on 2nd Street Pike (RT 232). Go to the next light and make a right on Industrial Highway. Go 1/2 of a mile to 1310 on the right side. The sign is on stilts and reads "1310 Industrial Mews" at the top. (Southampton Tennis Club is on left side of road). Drive into complex. We are the 3rd building on the left.

PA TURNPIKE Coming West: Get off at Exit 351, (Old Exit 28) (PHILA). Take the ramp marked RT 1 South.

Stay right, as you will exit immediately onto the ramp Street Road West (RT 132). Go slow because ramp has sharp turn, then follow for about 3 miles to Bustleton Avenue (RT 532). Proceed straight through this intersection. Now skip to directions for Bustleton & Street Roads.

95 Going South From NJ: Exit at Route 1 South and go about 5 miles to Street Road West (Just after Turnpike Coming West. Now proceed to PA Turnpike Coming West.

95 Going North From Phila.: Exit at Street Road. Go west for 6 miles (you will pass Philadelphia Race Track and RT 1 Avenue (RT 532). Proceed straight through this intersection then follow directions below.

From Bustleton & Street Roads: Go west on Street Road 1 1/2 miles to the 5th light (do not count the Bustleton light). Note: 9nd, 3rd and 4th light are very close together. Make a left on Gravel Hill Road. Go to the STOP sign and make a right on Industrial Highway. Go 1/4 of a mile to the sign on the left hand side of the street. The sign is at the top. (Southampton Tennis Club is on the right side of the road). Drive into complex. We are the 3rd building on the left.

From Doglestown-Charlton-Terhaste: Take Bristol Road East to Route 232 and left at the 7th light on to Industrial Highway. Skip to end of PA Turnpike Coming East.

Enter invitation @ 2007 TNT Amusements Inc. 1310 Industrial Highway Southampton, PA 18966 www.tntamusements.com